

# Envie



Seating: 5-6 Occupants  
 Size (LxWxH): 92" x 92" x 38"  
 234 x 234 x 96.5 cm  
 Weight Dry /Wet: 889 / 4082 lbs.  
 403 / 1852 kg  
 Gals/Liters: 385 / 1456  
 Pumps: Pump 1 3.0Hp/6.0bHp, 240V, 2Sp  
 Pump 2 3.0Hp/6.0bHp, 240V, 2Sp  
 Voltage/Amps: 240V/40A/60A  
 Jets: 54

- AquaGlo™
- Illuminated Contoured Pillow
- Aurora Beverage Coasters
- Aurora Cascade Water Features
- Illuminated Control Valves
- Excel-X™ (Simulated Wood)
- Freeze Protection
- Perma-Shield™ Bottom Pan
- Premier Styled Cover
- Halo Pro-Loc™ Stainless Steel Jets
- Steel Frame
- Northern Exposure™ Insulation System
- SmartTouch2 Controls

- Options:**
- Champagne Air (10 air jets)
  - Blower 1.5Hp, 1Sp
  - 24-Hour Circ Pump
  - CleanZone™
  - CleanZone™ Ultra Dual Sanitization
  - Vita Tunes
  - Wifi Connectivity



## Cabinet

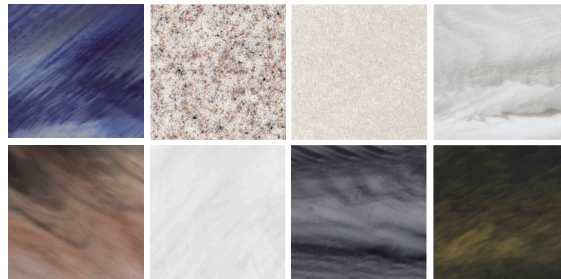
**Excel-X™** This ecologically friendly, high-impact styrene looks and feels like real, natural wood. It won't weather or stain and is virtually maintenance free.



Pecan Ridge      Resort Gray      Modern Mocha

## Colors

Your Vita Spa is available in eight vibrant colors to complement the beauty of its design.



Left to right: Majestic Sky, Sahara, Gypsum, Glacier Mountain, Tuscan Sun, Silver Marble, Storm Clouds and Midnight Canyon