

# Monarque



Seating: 6-7 Occupants  
 Size (LxWxH): 83" x 83" x 38"  
 211 x 211 x 96.5 cm  
 Weight Dry/Wet: 776 / 3388 lbs.  
 352 / 1537 kg  
 Gals/Liters: 315 / 1191  
 Pumps: Pump 1 3.0Hp/6.0bHp, 240V, 2Sp  
 Pump 2 3.0Hp/6.0bHp, 240V, 2Sp  
 Voltage/Amps: 240V/40A/60A  
 Jets: 49

- AquaGlo™
- Illuminated Contoured Pillow
- Aurora Beverage Coasters
- Aurora Cascade Water Features
- Illuminated Control Valves
- Excel-X™ (Simulated Wood)
- Freeze Protection
- Halo Pro-Loc™ Stainless Steel Jets
- Steel Frame
- Perma-Shield™ Bottom Pan
- Premier Styled Cover
- Northern Exposure™ Insulation System
- SmartTouch2 Controls

- Options:
- Champagne Air (10 air jets)
  - Blower 1.5Hp, 1Sp
  - 24-Hour Circ Pump
  - CleanZone™
  - CleanZone™ Ultra Dual Sanitization
  - Vita Tunes
  - Wifi Connectivity



## Cabinet

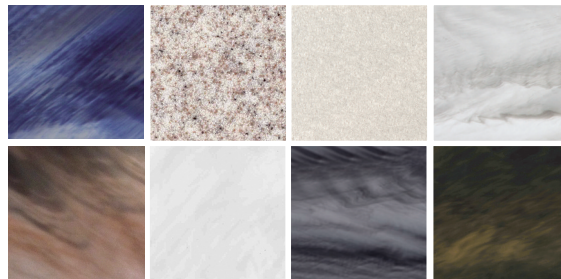
**Excel-X™** This ecologically friendly, high-impact styrene looks and feels like real, natural wood. It won't weather or stain and is virtually maintenance free.



Pecan Ridge      Resort Gray      Modern Mocha

## Colors

Your Vita Spa is available in eight vibrant colors to complement the beauty of its design.



Left to right: Majestic Sky, Sahara, Gypsum, Glacier Mountain, Tuscan Sun, Silver Marble, Storm Clouds and Midnight Canyon