

NEW 2019



Salon

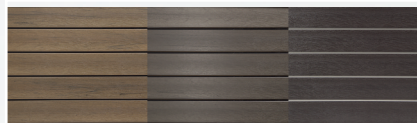
Seating: 5 Occupants
 Size (LxWxH): 92" x 92" x 38"
 234 x 234 x 96.5 cm
 Weight Dry /Wet: 952 / 4345 lbs.
 432 / 1971 kg
 Gals/Liters: 409 / 1547
 Pumps: Pump 1 3.0Hp/6.0bHp, 240V, 2Sp
 Pump 2 3.0Hp/6.0bHp, 240V, 2Sp
 Voltage/Amps: 240V/40A/60A
 Jets: 53



- AquaGlo™
- Illuminated Contoured Pillow
- Aurora Beverage Coasters
- Aurora Cascade Water Features
- Illuminated Control Valves
- Excel-X™ (Simulated Wood)
- Freeze Protection
- Perma-Shield™ Bottom Pan
- Premier Styled Cover
- Halo Pro-Loc™ Stainless Steel Jets
- Steel Frame
- Northern Exposure™ Insulation System
- SmartTouch2 Controls
- Options:
- Champagne Air (10 air jets) Blower 1.5Hp, 1Sp
- 24-Hour Circ Pump
- CleanZone™
- CleanZone™ Ultra Dual Sanitization
- Vita Tunes
- Wifi Connectivity

Cabinet

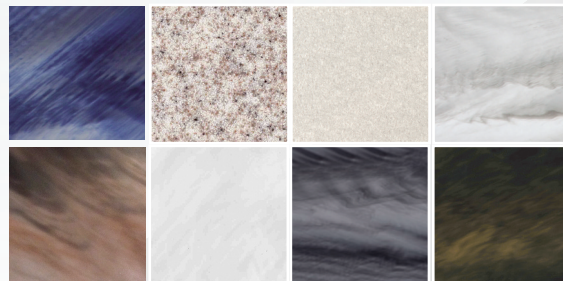
Excel-X™ This ecologically friendly, high-impact styrene looks and feels like real, natural wood. It won't weather or stain and is virtually maintenance free.



Pecan Ridge Resort Gray Modern Mocha

Colors

Your Vita Spa is available in eight vibrant colors to complement the beauty of its design.



Left to right: Majestic Sky, Sahara, Gypsum, Glacier Mountain, Tuscan Sun, Silver Marble, Storm Clouds and Midnight Canyon