

# A5L

CHOICE



## INCLUDED ON ALL A SERIES

- JetPak Therapy System®
- Comfort-Tested Seating
- Simplicity® Filtration System
- Premium Touch Screen Spa Control
- Exterior Safety Lighting
- Premium Headrests
- Durable 3-Layer Spa Shell
- Wood-Free EnduraFrame™
- Solid ABS EnduraBase™
- High-Density Full-Foam Insulation
- Patio Performance™ Fabric Cover

## CHOICE TRIM LEVEL FEATURES

- Standard Cabinetry
- Standard Jet Bezels
- Standard Water Feature
- Standard Interior Lighting
- Standard JetPak Count

## INDIVIDUAL OPTIONS

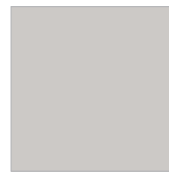
- Luxury Package
- A Series Premium Audio System
- CloudControl 2™ WiFi Module
- Clear Comfort® Premium AOP System
- EOS™ O3 Enhanced Ozone System
- WellSpring™ Ozone System
- WellSpring™ Dedicated Filtration Pump
- FROG® @ease® Water Care System (USA Only)
- Natural Mineral Cartridge
- Covermate I™ Cover Lifter
- Covermate III™ Cover Lifter
- Premium A Series Step
- Element Step
- Multi-Use Spa Box
- Premium Non-Slip Aquatic Surface Package
- 120V~15A GFCI Option

## COLOR PROFILES

### Interior



Almond



Mist



Platinum



Snow

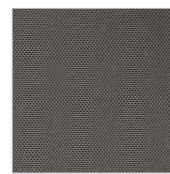
### Exterior



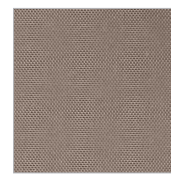
Coastal Grey



Woodland Brown



Dusk



Dove

### Cover

## SPA SPECS

AVAILABLE SEATS 3

THERAPY JET PUMPS 1

PREMIUM JETPAK SEATS 2

DIMENSIONS 7' x 5' 8" x 2' 8"

2.13m x 1.72m x .81m

WATER CAPACITY 202 gal / 765 L

DRY WEIGHT 639 lbs / 290 kg

FILLED WEIGHT 3035 lbs / 1377 kg



Scan the QR code to design your custom Bullfrog Spa today!

bullfrog  
spas